

05/11



No-tre Père et no-tre Dieu, nous te pri-ons.

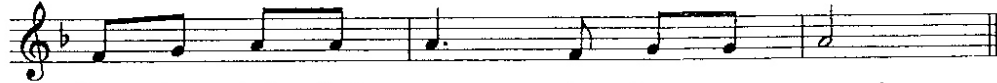
[© Studio SM]

12/11



É - cou - te - nous, Sei - gneur !

19/11



Sou-viens-toi, Sei - gneur, de ton a - mour !

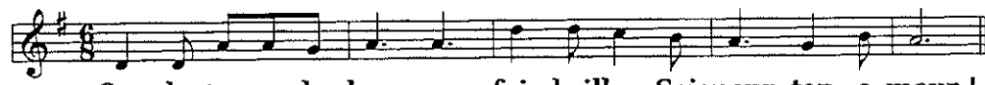
J.G. ; MNA

26/11



Par Jé-sus Christ ton ser-vi - teur, nous te pri-ons, Sei - gneur.

03/12



Sur la ter-re des hom-mes, fais briller, Seigneur, ton a-mour !

10/12



É - cou - te no - tre pri - è - re,



Sei - gneur, viens nous — sau - ver.

17/12



En - tends nos ap - pels et sau - ve - nous !

[MNA 24.24 - © Brépols]

24/12

4ème Avent B



Fais ve-nir ton Rè - gne au mi-lieu de nous.

J.G. MNA

24/12

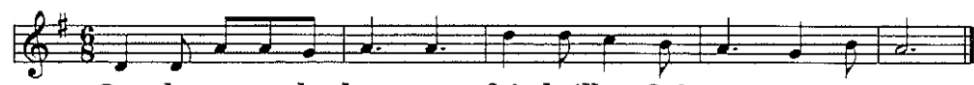
Nuit NOEL



Dieu a - vec nous, e - xau - ce - nous !

J.G. MNA

25/12



Sur la ter-re des hom-mes, fais briller, Seigneur, ton a-mour !

31/12



Les yeux le-vés vers toi, Sei - gneur, nous te pri-ons.

07/01



Musical notation for 07/01. The staff is in treble clef with a key signature of one flat (B-flat) and a 2/4 time signature. The melody consists of quarter and eighth notes. Chords are indicated above the staff: Lam (Lam), Fa (Fa), and Mim (Mim).

É - cou - te - nous, Sei - gneur !  
Af - fer - mis - nous, Sei - gneur !

V 50-51

14/01




Musical notation for 14/01. The staff is in treble clef with a key signature of one flat (B-flat) and a 2/4 time signature. The melody consists of quarter and eighth notes.

É - cou - te la pri - è - re de ton peu - ple.

Y 27 - SM

21/01



Musical notation for 21/01. The staff is in treble clef with a key signature of one flat (B-flat) and a 2/4 time signature. The melody consists of quarter and eighth notes. Chords are indicated above the staff: Do (Do), Sol (Sol), Lam (Lam), Mim (Mim), and Fa (Fa).

Pour les hom - mes et pour les fem - mes pour les  
en - fants de la Ter - re ton é - gli - se qui t'ac -



Musical notation for 21/01. The staff is in treble clef with a key signature of one flat (B-flat) and a 2/4 time signature. The melody consists of quarter and eighth notes. Chords are indicated above the staff: Do (Do), Ré7 (Ré7), Sol (Sol), Ré7 (Ré7), and Sol7 (Sol7).

cla - me vient te con - fier sa pri - è - re.

SM-C 231